

**EXCELLENT PERFORMANCE FULLY
MEET THE NEEDS OF VARIOUS USERS.**



EXCELLENT BASIC PERFORMANCE

CAB DISPLAY



The spacious and bright cab maintains a comfortable driving



Comfortable safety seat equipped with shock absorption function to provide a more comfortable use



The steering wheel and operation panel are fully functional and easy to understand, making it easy to operate



FRONT AND BACK WINGSPAN

Equipped with strong arms at the front and rear and drive.experience.experience.



RELIABLE WORKING PERFORMANCE

Optimize the boom to reduce solder joints

Durable and sturdy oil cylinder

Spacious and comfortable cab

Rearview mirror

Adjustable safety seat

Engineering rubber track



Bucket



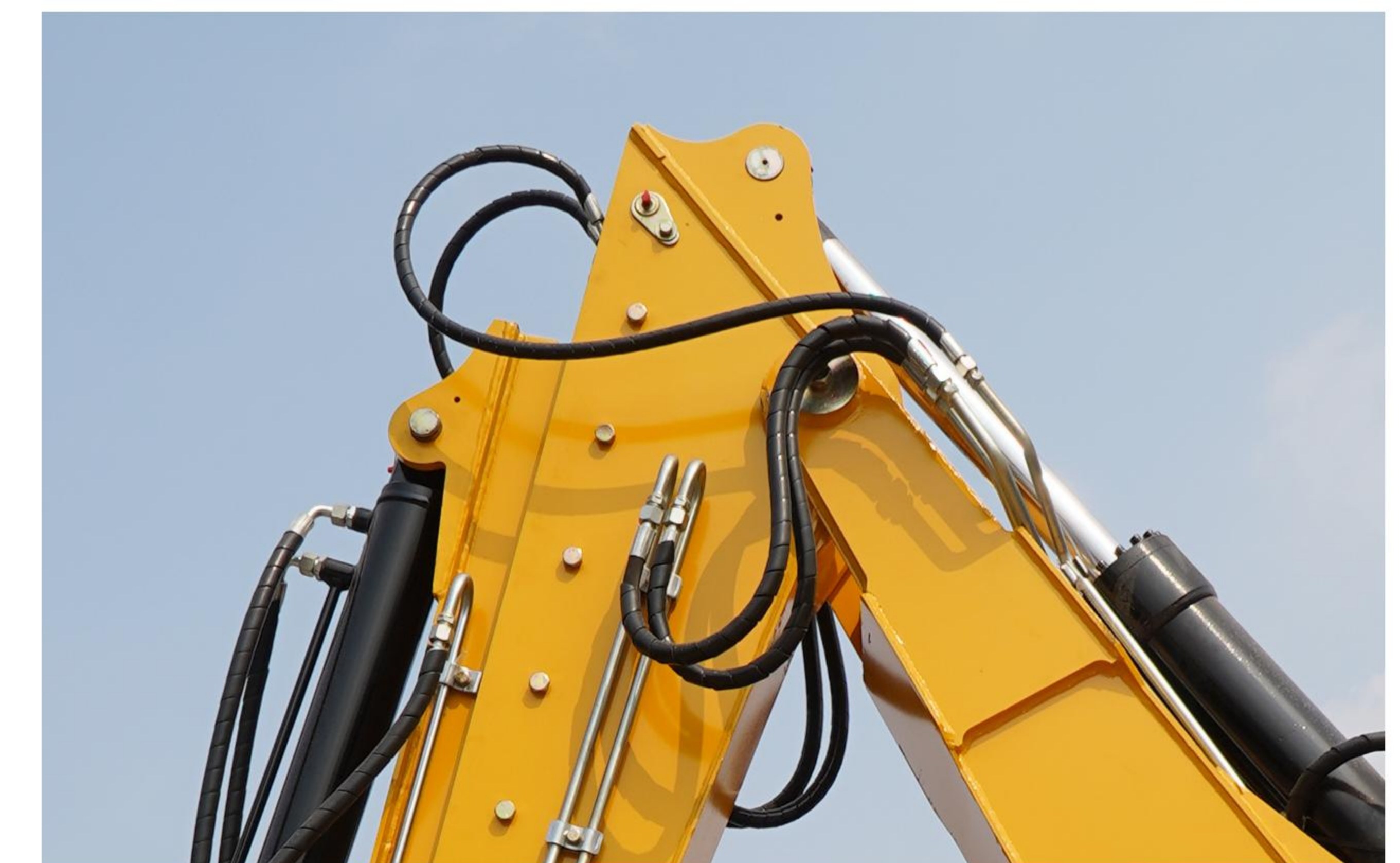
Reversing indicator



A sturdy large arm



Comfortable cab



Tubing



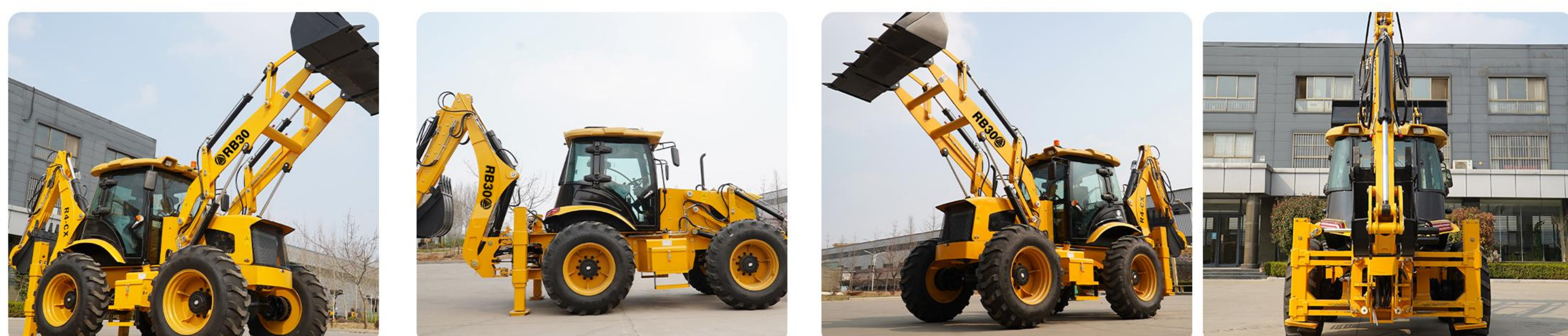
**EXCELLENT OPERABILITY
AND COMFORT**

PRODUCT HIGHLIGHTS

Product uses and features

It is widely used in earthwork construction machinery for highways, railways, construction, hydropower, ports, mines and other construction projects. It is mainly used for shoveling bulk materials such as soil, sand, gravel, lime, coal, etc. It can also be used for light shoveling operations on ore, hard soil, etc.

External Display



Show Details



The vehicle is equipped with heating and cooling air conditioning, a comfortable cab, and spacious seats to ensure the operator's experience. At the same time, the convenient operating system and solid and durable hardware configuration ensure that it can adapt to a variety of terrains and environments during use.



Specification

Overall Dimension	Length(with bucket on ground)	in (mm)	253.94 (6450)
	Overall width (at stabilizer)	in (mm)	98.43 (2500)
	Load Bucket width	in (mm)	90.55 (2300)
	Height(To the top of the cab)	in (mm)	122.83(3120)
	Height(To the top of the digging pole)	in (mm)	155.12 (3940)
	Wheel base	in (mm)	91.93(2335)
	Back wheel Tread	in (mm)	84.21 (2139)
Main Loading Technical Specification	Rated load	lb(kg)	6172.94 (2800)
	Operating weight	lb(kg)	17636.98(8000)
	Rated bucket capacity	ft³(m³)	52.97(1.5)
	Max. dump clearance	in (mm)	110.24(2800)
	Optional Max. dump clearance	in (mm)	122.05(3100)
	Dump reach	in (mm)	34.25(870)
	Radius of turn (Outside of bucket)	in (mm)	226.38(5750)
Main Digging Technical Specification	Rated digging bucket capacity	ft³(m³)	10.59 (0.3)
	Max. digging depth	in (mm)	157.48 (4000)
	Optional digging depth(telescopic digging boom)	in (mm)	196.85-216.54(5000-5500)
	Max. digging radius	in (mm)	210.43 (5345)
	Max. dumping height	in (mm)	147.24 (3740)
	Max. Digging Height	in (mm)	215.35 (5470)
	Lifting force at Max. digging radius	lb(kg)	2689.64 (1220)
The hydraulic system	Working pump discharge	ml/r	63
	Working pump pressure	mpa	22
Oil Capacity	The hydraulic oil tan	gal (L)	33.02 (125)
	Diesel fuel tank	gal (L)	33.02 (125)

Diesel engine

Brand/Model	Yuchai YCD4J22T-125 (Euro 3)
Type	In Line, Direct injection, Four-Stroke, Water Cooling
Rated output	91(KW)
Optional engine	Cummins F3.8 (Euro 3)/Yuchai YCF36125-S500 (Euro 5)/Cummins QSF3.8 (EPA4)

Transmission System

Torque Converter	Model	315
	Cooling type	Pressure oil circulating
Gearbox	Type	Synchromesh mechanical shift
Drive axle	Type	Four wheel drive / Four wheel steering / Crab walk
Gear shift position		4 F、 4 R
Speed (F/R) km/h	F1, 5km/h; F2, 10km/h	F3, 18km/h; F4, 40km/h
	R1, 5km/h; R2, 10km/h	R3, 18km/h; R4, 32km/h
Size of tire		16.9-28

• Please read the instruction manual carefully and use it correctly.

• Be sure to fasten your seat belt during operation. ※Except for soft top specification

• When driving construction machinery with a body weight of less than 3t, please receive "special education on driving construction machinery for vehicles"

in advance, and be sure to participate in "skills training for driving construction machinery for vehicles" if it is more than 3t.

R308 According to the conditions of the Occupational Safety and Health Act, the body mass may reach 1200kg

• In order to prevent breakdowns and accidents, be sure to check the machine regularly.



BACKHOE LOADER

RB30

