

**Hinged design of the machine,  
with brand power, Soft roar,  
elegant start, strong and  
stable output power**

RL20 advantages in power, efficiency, versatility and value are driven by our robust features. Our compact articulated design uses less horsepower to do most jobs-that means less surface impact and lower operating costs. Equipped with Yuchai 4105 turbocharged engine, providing more power support for driving.

RIPPA  
MULTIFUNCTIONAL LOADER

# RL20



## **More powerful engine**

The power is optimized and matched, with high fuel efficiency, large low-speed torque, strong power and high operating efficiency. An electronically controlled high-pressure common rail fuel system is used to achieve precise combustion control. Intelligently adjust the power curve to meet multiple working modes to achieve high efficiency and fuel saving.

## **Green and environmentally friendly**

In addition to its outstanding horsepower and performance, it also has extremely low noise and vibration levels, excellent fuel efficiency, and meets the final version of Euro V and US Stage IV emission standards, contributing to environmental protection and reducing air pollution.

## **Compact hinge design**

More flexible body, efficient integrated layout, and reduced energy loss during operation.



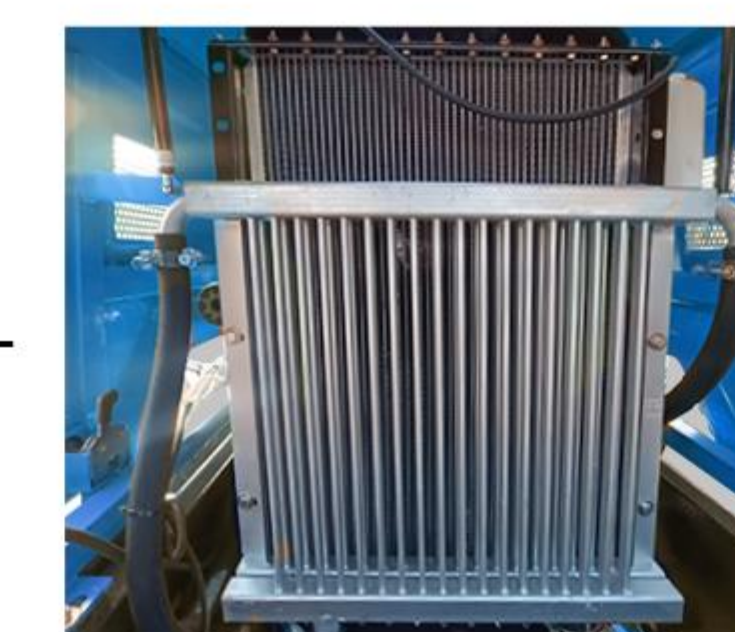
## **off-road tires**

The core advantage of loader off-road tire is that it can adapt to various complex terrains. Strong grip, reduced idling in slippery environment and guaranteed effective transmission of power; Significantly improve loader trafficability on unpaved pavements for more stable and efficient operation.



## **Radiator**

The radiator can balance the operating temperature of the engine and hydraulic system, ensuring the stable operation of the loader.



Dumping height  
**3500/3800mm**

# Even safer. Even more comfortable.

## RL20 WHEEL LOADER

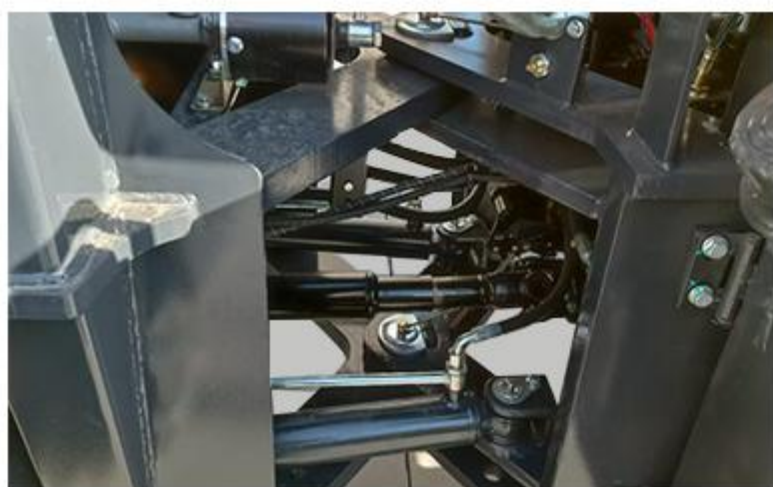


### COMFORTABLE

Comfortable and spacious driver's cabin, rain and sun protection, clearly arranged control panel, centralized button design, intelligent dashboard, ergonomic multifunctional operating handle, allowing you to drive comfortably

### LINKS AND DRIVES

The lightweight articulated structure and shaft transmission design of the frame, the articulated centering arrangement, strong power, small steering angle and turning radius, better passing ability, and flexible operation



### SAFETY HYDRAULIC CYLINDER

The high-quality sealing design enhances safety. The hydraulic lifting cylinders of loaders mostly adopt a multi-level sealing structure, which can effectively prevent hydraulic oil leakage, avoid a sudden drop in lifting force caused by oil leakage, and prevent safety accidents due to the accidental falling of the bucket.



### LARGE AND SMALL ARMS

The boom and arm (of the loader) feature enhanced thickness. They are made of high-quality materials, undergo anti-rust coating processes, and have key parts specially treated for corrosion protection.

### LED HEADLIGHTS

The dustproof and waterproof design of the front headlights can block nighttime dew, rainwater, and other elements, preventing the lights from flickering or going out. This ensures stable and bright lighting for continuous nighttime operations and safeguards operational safety





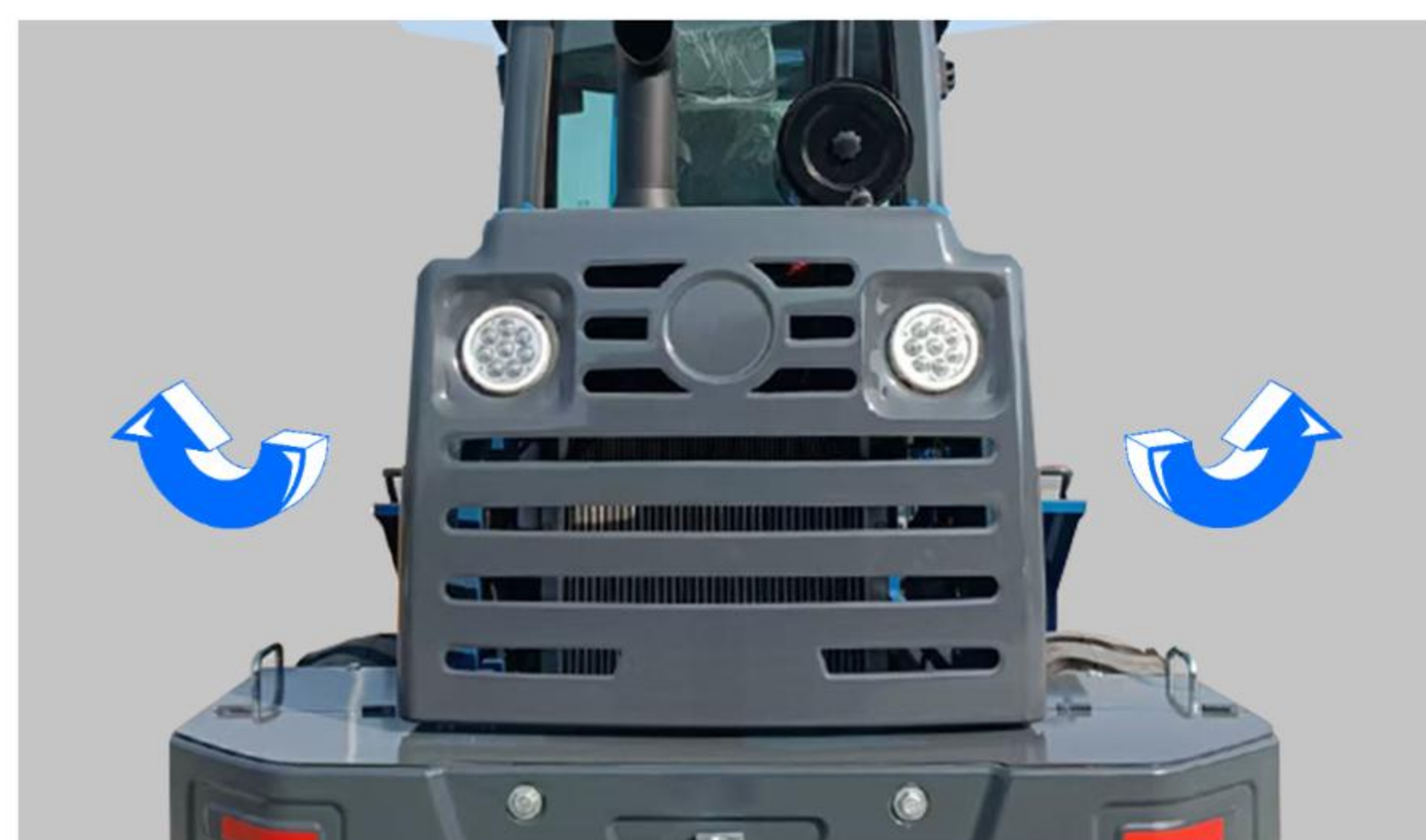
## SPECIFICATION

Model		US	RL20
Basic parameters	External dimensions	267.92*88.65*113.078in	6800*2250*2870 mm
	Rated bucket capacity	45.203ft³	1.28m³
	Rated load capacity	6172.88lb	2800kg
	Dumping height	137.9/ 149.72in	3500/3800mm
	Unloading distance	43.340in	1100mm
	Maximum driving speed	24.855mph	40km/h
	Maximum gradeability	30°	35°
	Steering angle	35°	35°
	Minimum ground clearance	14.972in	380mm
	wheelbase	108.35in	2750mm
	Track width	66.586in	1690mm
Tire Size	23.5-16	16/70-20	
Engine	Engine model	Yuchai 4105 Boost	Yuchai 4105 Boost
	Engine power	115.6hp	85kw

**If it's easy maintenance you're looking for, take a look at the RL20**

### Engine cover

The covers on both sides of the machine body can be opened, which is more convenient for maintenance and time saving



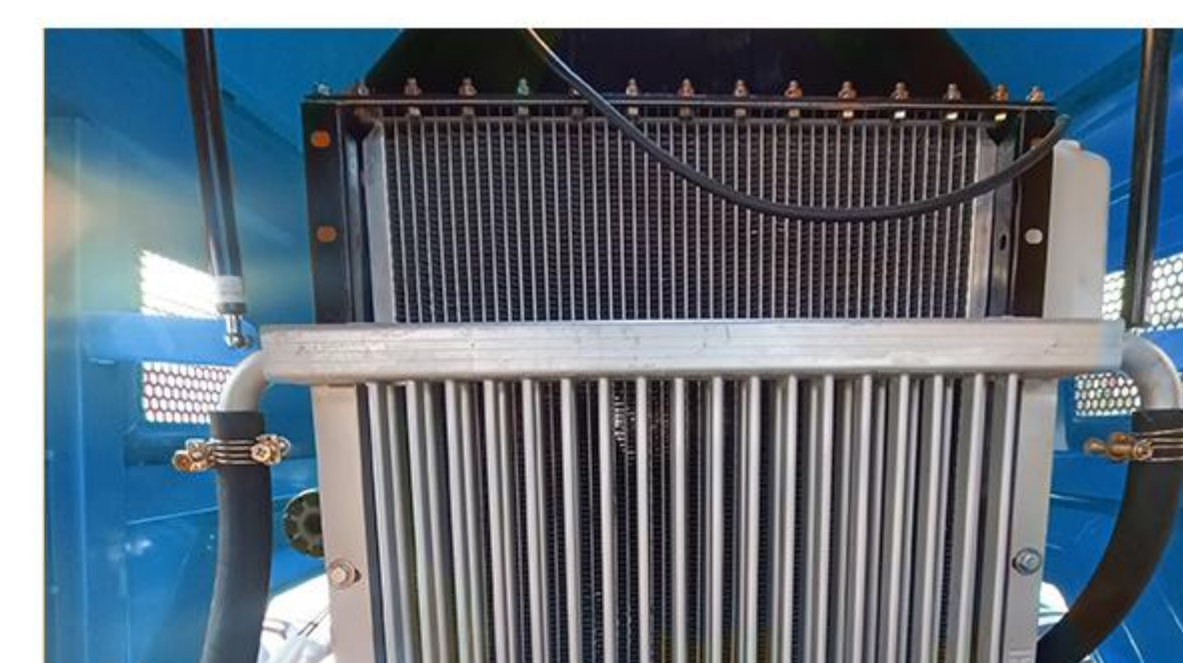
### Hydraulic hose fitting

The joint structure is easy to disassemble and assemble, and the layout is regular, allowing maintenance personnel to quickly disassemble and install the oil pipes, check the internal conditions, and facilitating the inspection of the oil pipe status during maintenance.



### Modular design

The engine compartment is rationally laid out, with key components easily accessible for quick inspection, repair and maintenance. Ample space is reserved inside the compartment to facilitate tool operation and collaborative work, thereby improving efficiency. The split-type radiator enhances heat dissipation efficiency and allows for easy cleaning and maintenance.



### Structured layout

Open the engine hood, the internal layout is neat, all kinds of pipelines and harnesses are clear, daily inspection of oil, coolant, filter elements, etc. can be quickly reached without complex operation



**RL20**

- Please read the instruction manual carefully and use the machine correctly.
- Always wear a seat belt when working. (ROPS specifications only)
- If you are operating construction machinery with a machine mass of less than 3 tons, you must take the "Special Training for Vehicle-Mounted Construction Machinery Operation" course beforehand. If the machine mass is 3 tons or more, you must take the "Vehicle-Mounted Construction Machinery Operation Skills Course".
- To prevent breakdowns and accidents, be sure to inspect the machinery regularly.
- Specific voluntary inspections are required to be carried out by an inspection company registered with the Minister of Health, Labor and Welfare or the Director-General of the Labor Standards Inspection Bureau.